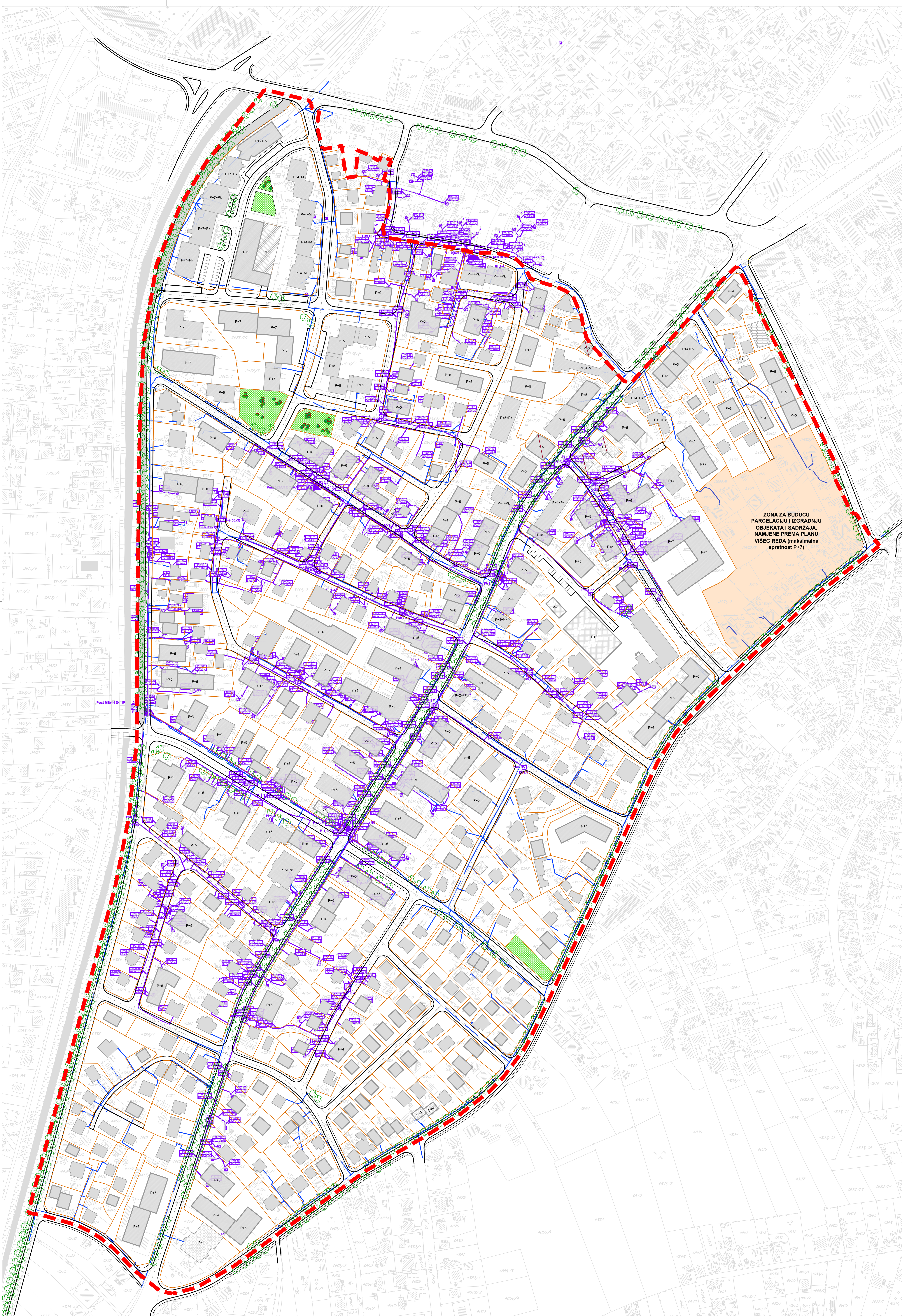


REGULACIONI PLAN "FILIP VIŠNJIĆ" U BIJELJINI

- NACRT -












ZONA ZA BUDUĆU
PARCELACIJU I IZGRADNJU
OBJEKATA I SADRŽAJA
NAMJENE PREMA PLANU
VIŠEG REDA (maksimalna
spratnost P+7)

P.7 TELEKOMUNIKACIONA INFRASTRUKTURA
- karta planiranih rješenja

LEGENDA:

OPŠTE OZNAKE:

-  GRANIČNA OBUHVATA IZMJENE RP (POVRŠINA OBUHVATA: P=37,03 ha)
-  Trasa TELRAD TK infrastrukture
-  Trasa MTEL TK infrastrukture
-  Simbol MTEL TK infrastrukture - TCG Izvod
-  Simbol MTEL TK infrastrukture - TCG ZOK
-  Simbol MTEL TK infrastrukture - miniMSAN uređaj
-  Simbol MTEL TK infrastrukture - TCG rezerva
-  Simbol MTEL TK infrastrukture - TCG nastavak
-  Simbol MTEL TK infrastrukture - TCG priključak

JP "DIREKCIJA ZA IZGRADNJU I RAZVOJ GRADA" DOO BIJELJINA

INVESTITOR:	GRAD BIJELJINA
NAZIV PLANA:	REGULACIONI PLAN "FILIP VIŠNJIĆ" U BIJELJINI
CRTEŽ:	TELEKOMUNIKACIONA INFRASTRUKTURA
MAŠKERA:	1:1000
LIST BROJ:	P.7